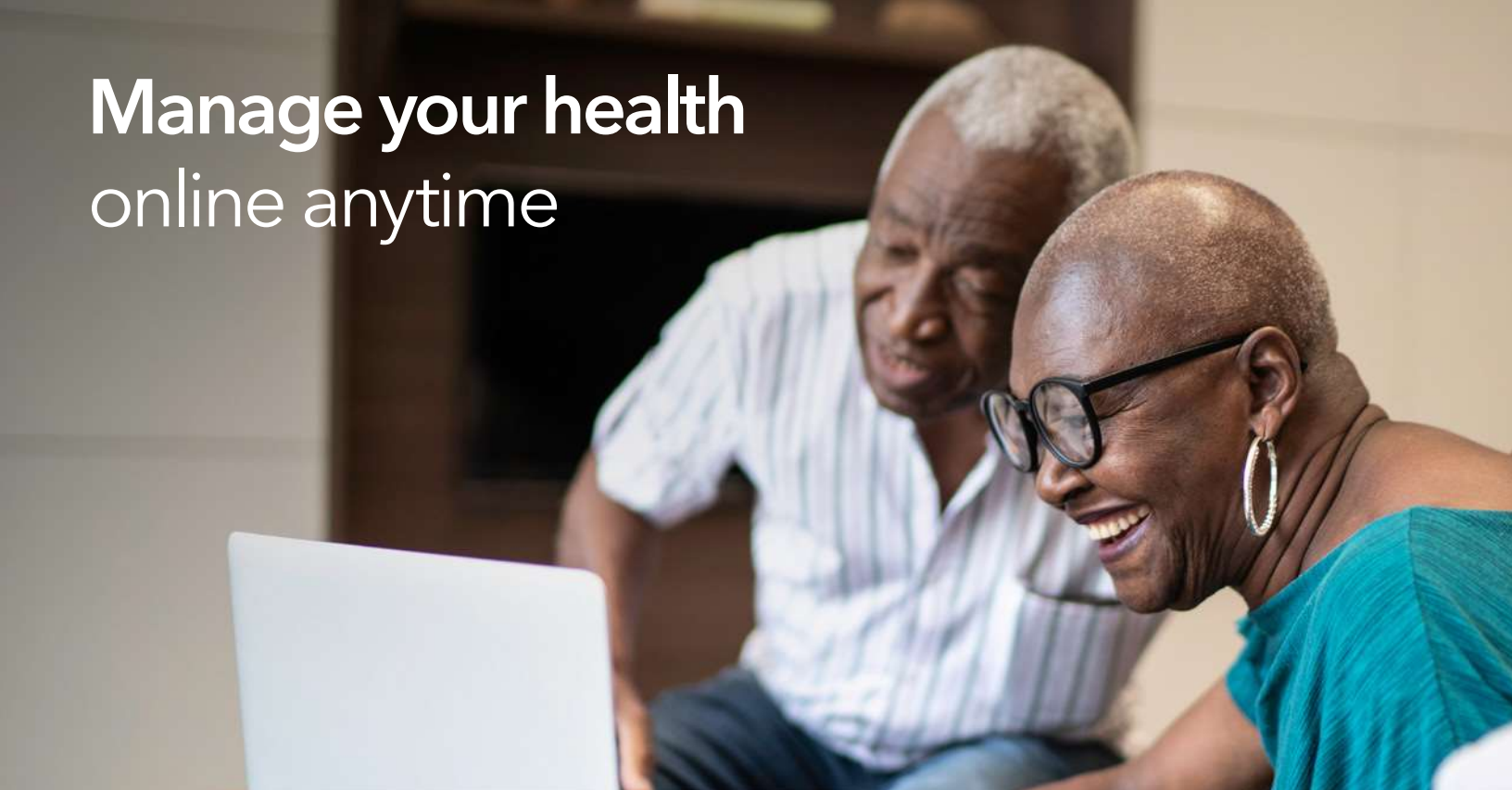


Manage your health online anytime



At **kp.org**, it's simple to connect to great health and great care. Check out all the time-saving tools and resources you get as a member.

Sign on to **kp.org** anytime to:¹

- View most lab test results
- Refill most prescriptions
- Email your doctor's office with nonurgent questions
- Schedule and cancel routine appointments
- Print vaccination records for school, sports, and camp
- Check your plan's benefits, view claims, or estimate costs²
- Manage a family member's health care³

Register to get started—it's easy

If you haven't already, register today to access all these convenient features. Just go to **kp.org/registernow** from a computer or mobile device and follow the sign-on instructions.

- You'll need your medical/health record number, which you can find on your Kaiser Permanente ID card.
- See detailed instructions on the back of this page.

Download the Kaiser Permanente app

After you've registered, you can download our **Kaiser Permanente app** to your mobile device to use these tools on the go. Just use your **kp.org** user ID and password to activate the app, and you'll be all set.

(continues on next page)

¹These features are available when you get care at Kaiser Permanente facilities.

²These tools are not yet available on smartphones and tablets.

³Due to privacy laws, certain features may not be available if they're being accessed on behalf of a child younger than 18. Your child's physician may also be prevented from giving you certain information without your child's consent.



REGISTRATION PROCESS

Go to **kp.org/registernow**

Click the button **Create my account** to begin a 6-step process.

Each step has on-screen instructions, and the process is summarized below.

After each step, click **Continue**.

1 Membership Info

First, fill out the on-screen form with your background information.

2 Terms and Conditions

Check the box to agree to our Terms and Conditions.

3 Account Details

Enter your account details and select preferences that best fit your needs.

4 Confirm Identity

Follow the prompts to confirm your identity.

5 Secret Questions

Choose your secret questions to help us keep your account secure.

6 Create Password

Finally, choose a password.



SUCCESS

You have completed the registration process.

NOTE

Please save your User ID and Password.
You will need to enter this information each time you log into your **kp.org** account.



SIGN IN

As soon as you have your password, you can sign in and start using all the great members-only features of **kp.org**.



Questions? We're here to help.

Call Member Services at **800-777-7902 (TTY 711)**,
Monday through Friday, 7:30 a.m. to 9 p.m.

Services covered under your health plan are provided and/or arranged by Kaiser Permanente health plans: Kaiser Foundation Health Plan of the Mid-Atlantic States, Inc., in Maryland, Virginia, and Washington, DC, 2101 E. Jefferson St., Rockville, MD 20852. Services for self-insured plans are administered by Kaiser Permanente Insurance Company, One Kaiser Plaza, Oakland, CA 94612.